

CERTIFIED LAND CORNER RECORDATION

DESCRIPTION OF CORNER EVIDENCE FOUND, AND ORIGINAL RECORD (If known)

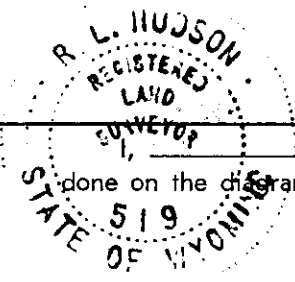
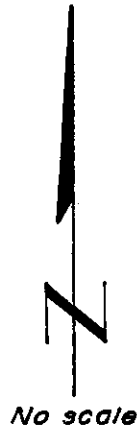
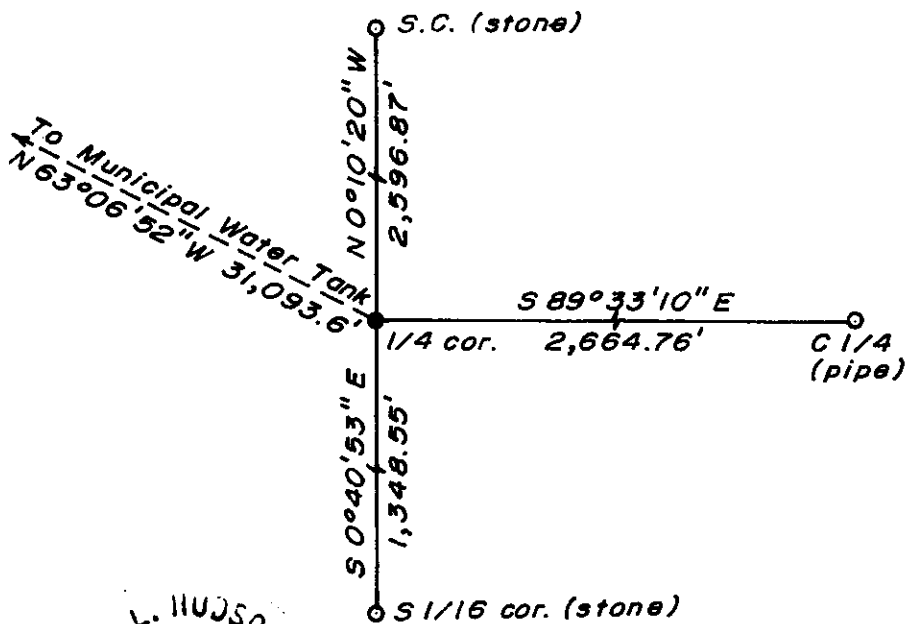
LOCATION Found a granite stone, in place, with "¼" on west face and "M" on east face. Set by Malcolm D. Martin, former Laramie County Surveyor.
 ¼
 S.31 S.32
 T.14N., R.65W. G.L.O. record - Unknown.
 6th P.M.

DESCRIPTION OF MONUMENT AND ACCESSORIES ESTABLISHED TO PERPETUATE THE ORIGINAL LOCATION OF THIS CORNER:

At the corner: Not remonumented.
 Accessories: Rebuilt rock mound alongside corner monument.

SKETCH, WITH COURSE AND DISTANCE TO ADJACENT CORNER IF DETERMINED IN THIS SURVEY.
 (May Sketch or Paste Reproduction on Reverse Side.)

Basis of Bearing: City of Cheyenne Datum.
 Distances based on measurements by electronic means.
 Coordinates: (City of Cheyenne Datum)
 (x) = 630,248.38 feet; (y) = 72,072.79 feet



R. L. Hudson certify that I have carefully performed ~~or reviewed~~ the work done on the diagrammed corner as reported on this recordation form and approve the same.

R. L. Hudson Wyoming L.S. No. 519
 Signature of Surveyor Registration No.

STATE OF WYOMING,
 Office of Clerk and Recorder,
 County of Laramie

511169

This "corner record" was filed for record on the 21 day of December, 1978, was noted on the cross-index plat and is assigned page No. _____, in book No. _____.

Don C. Mitchell
 County Official

| | | | |
|-----------------|------------|-----------|-----------|
| Cross Index No. | T. _____ | R. _____ | Mer. |
| | <u>X-5</u> | <u>14</u> | <u>65</u> |
| | _____ | _____ | Mer. |
| | _____ | _____ | Mer. |
| | _____ | _____ | Mer. |
| | _____ | _____ | Mer. |
| | _____ | _____ | Mer. |
| | _____ | _____ | Mer. |

511169

Photographed
Indexed
Posted
Approved